

NATIONAL ATV JAMBOREE RIDES

(In no particular order)

Note: Rides range from beginner to advanced and will last from 2 to 3 hours to an entire day of riding.

1. **WHITE SAGE:** This trail is recommended for **ADVANCED RIDERS**. From start to finish it will take you about two to three hours to traverse. It's a great ride if you're looking to fill out an afternoon or just take a quick spin. At the mouth of Chalk Creek Canyon the trail is labeled as ONE WAY. This helps prevent congestion on the narrow and steep parts of the trail. There are several switchbacks and rocks on the trail, watch your tire rims. When you reach the top of WHITE SAGE you'll find it an excellent place for lunch. As you tackle the trail a watchful eye should see wild turkeys, deer and depending on the time of year you could see elk. When you leave WHITE SAGE and head down the trail you should be prepared to get wet. The trail runs into Chalk Creek. You will cross the creek several times. At one point the creek is the trail. An excellent trail to cool off on. One trail the advanced rider will repeat time and time again. Guaranteed.



2. **FILLMORE LOOP (Sand Rock Ridge):** This trail is recommended for **INTERMEDIATE RIDERS**. It can be a great family trail and should take about five to six hours to complete. It is steep on some parts of SAND ROCK RIDGE and care should be taken for inexperienced riders. This trail loop is driven on forest roads. If you are taking this loop it is recommended that you go up SAND ROCK and down Chalk Creek. This trail will reach an altitude of approximately 10,000 feet. Make sure that your machine is jettied for this altitude. The trail has some excellent vistas, bring your camera. A stop at the head of PARADISE CANYON will be a real crowd pleaser. Some years the trail has to be cut through the snow banks. The trail winds through pine and aspen forests. As you come down Chalk Creek you may either continue through the creek crossings or take the main canyon road that is open for Jamboree riders. Early morning and late evening are great times to see the wild life. More than one ride will be guided on this route, depending on the speed you want to travel and how many stops you like to take for pictures. A must for any visitor to the area.



3. **ROBINS VALLEY/COFFEE PEAK:** This trail is a great family ride and should take about six to seven hours to complete. It will accommodate **BEGINNER RIDERS**. Most of this trail is driven on forest roads. You have one of two ways to begin this ride. You may either head up Chalk Creek or take the main canyon road. Once you reach the picnic areas in the canyon continue up the road for several miles until you come to a major road junction. A right hand turn will put you riding towards Sand Rock Ridge. A left-hand turn will put you heading north towards Robins Valley. A large part of this trail is on the top of the PAHVANT Mountain Range. Your ride will take you through large aspen forests. On your way up



you will pass an old cow corral. If you would like to take an excellent side trip turn left here and proceed down into Bear Hollow. This is an excellent trail on which to see deer during morning and evening hours. You will have to back track to get back to the main trail, but it's worth it. ROBINS VALLEY is a great little valley in the top of the mountain. Definitely a great spot for a few family pictures. The ride back is on the same trail.

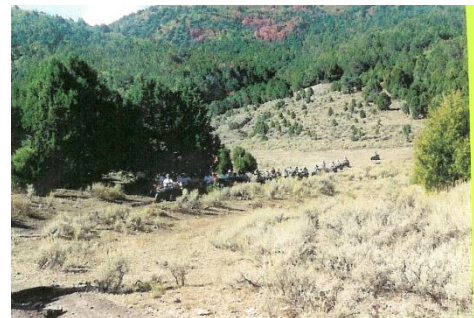
4. **CLEAR LAKE BIRD REFUGE & LACE CURTAINS/LAVA TUBES (Desert Ride):**

This trail is excellent for all ages. It's an **EASY TRAIL**. It takes you through the desert directly west of Fillmore. You can tailor this ride to fit just about any time schedule. On your way you can see Indian writing and extinct volcanoes. The desert is a great place to be in the late spring. The trail can be very dusty at times. A dust mask is recommended. The local Bureau of Land Management (BLM) office hosts this ride during the Jamboree with some excellent guides.



5. **MOUNTAIN SHEEP:** This trail is suited for **BEGINNERS**. It starts up Sand Rock Ridge, but just before you reach Sand Rock you need to take a left. The trail is marked, and you shouldn't have any trouble finding it. The trail starts out riding through scrub oak and as you climb higher you will get into the pine trees. There is a small, undeveloped picnic area at the end of the trail. This is a great trail for lunch. It is a short ride and only lasts about 2 ½ to three hours.

6. **BIG OAKS (Dry Wash)** This is another trail that will suit **ANY LEVEL** of rider. You will ride on improved gravel roads for the first 15 miles, winding your way past hay and wheat fields until you come to the town of Kanosh. The trail is well marked as you travel south of Kanosh to the mouth of Dry Wash. You will enjoy the cool oak trees and splashing through several small streams (doesn't sound to dry to me). The trail continues for several miles through Dry Wash until you reach **BIG OAKS**. After you pass what the locals call **BIG OAKS** the road joins up with the main **PAIUTE TRAIL** and heads down Corn Creek (Kanosh Canyon). There is a developed campground with water and rest room facilities. Once you reach the town of Kanosh you back track to Fillmore on the same route. The ride normally takes about five to six hours depending how long you stop for pictures.



7. **PIONEER/MAPLE HOLLOW TRAIL:** This trail heads north from Fillmore towards the mouth of Pioneer Canyon. This is an **EASY RIDE**. The first part is traveled on the lower foothills. After you reach the canyon you will find the travel through pine forests a great ride. The old forest-service road is washed out in spots and is only accessible by ATV. There have been some trophy deer bagged in this canyon. After exiting the canyon, your guide will take you on to the north to Maple Hollow and its newly refurbished campground. This is a great place for lunch. Enjoy the experience. The trail back is the same way you came.

8. **POKER RUN:** This ride is one of the favorites of the Jamboree. The first poker punch will be at the Pod early Friday morning, with groups leaving every half hour according to the first letter of your last name. If you are with a group, decide on which last name you want to use and ride together. The route

has been changed this year to provide some variety for long-time Jamboree participants. The route will take you south from Fillmore to Kanosh, where gassing up would be a good idea. Breakfast will be served by the East Millard Search and Rescue at the Kanosh City Park. The second poker punch will take place at breakfast. The route then goes farther up Corn Creek Canyon, exiting the main road at three different locations. You can choose the Horse Flat Trail, which is the closest route and will also be the route with the GPS treasure hunt in 2010. The second choice is the Al Gay Trail which is the most difficult route. If using this route, turn left before the Caution sign to follow the Paiute 01 Trail or continue up the mountain at the Caution sign for a steep, rocky experience. Four wheel drive machines with over 350 cc is highly recommended. The third route goes farther up Kanosh Canyon and turns left at the Cottonwood turnoff. This third route is the only one that can be used by machines over 50 inches in width. This is well marked with a forest service sign. The route goes from there up the mountain, through the oak and quakies and comes to a junction in the road. From there the riders have a choice of taking the lower route on an ATV trail through the oak and quakies, up and down through canyons to the next junction, or taking the upper better traveled forest service road along the top of the mountain, meeting the other route on the east side of the mountain. The route is the same from this point, past Burnt Fork Junction (don't turn right and go to Richfield), turning left and going up to the top of the mountain. The third poker punch is found just at the top of the mountain. The fourth poker punch is at the restroom just south of White Pine Junction. At the junction, riders again have the choice of going down Sand Rock Ridge, which is by far the shorter route or going along the top of the Paiute Trail and down into Chalk Creek Canyon and back to Fillmore. The fifth poker punch will take place at the steak dinner (\$10), which will be served at 6 and 7 p.m. at the pod. The poker prizes will be given out at the Awards Program at 7:30 p.m. on the Pod lawn with our favorite Fred Christensen as MC. The Coke Cola Company helps sponsor this event.

9. **ALL LADIES RIDE:** This is an **EASY** ride for females **ONLY**. A delicious, catered lunch will be provided. The ladies of 2005 voted to rename this "Sherry's Crocheting Ride to Pistol Rock". This is a "don't miss this one" for ladies who want an easy ride with a great time at lunch.

10. **BILLY'S SECRET RIDE:** **DIFFICULT** If you have ever followed Billy around the hills, you will know this will be a ride to remember. It is for **ADVANCED, EXPERIENCED RIDERS** only and is limited to those who ride a machine over 350 cc with four wheel drive. This ride is about 65 miles, some of them very rough.



11. **MEADOW BENCH:** This ride is an **EASY RIDE** and should take you about three to four hours. You head south from Fillmore. The first part of the trail has you riding through the lower foothills between Fillmore and the town of Meadow. Once you reach Meadow Creek Canyon you turn east towards to the mountain. At the mouth of the canyon take a right hand turn and cross an old wood bridge. You will drive past small groups of mahogany trees. Most of the vegetation will be juniper trees. The locals call them cedar trees. The trail is well maintained and will take you to some excellent views of the valley. There is a lot of history about the Indians in this area and a surprise in Meadow Creek Campground, where there will be a stop for a snack or lunch, whichever you prefer. The road back is the same way you got there.

12. **KIMBERLY aka Going to Hoover's for Lunch** (Trailer your ATV To Trail Head): This will be an all day ride. It is classified as an **EASY RIDE**. The trail will take you through some of the greatest mountain views in the state. The old mining town of KIMBERLY still has some building standing. You will pass numerous old mines that once held the promise of a good life, but didn't quite pan out. As you make your way through the pine and



aspen forests you will be impressed by the beauty of this mountain. Make sure you bring your camera. Every turn is a KODAK moment. You may want to check your jetting before starting this trip and pack a little extra gas, two gallons would be sufficient. If your fuel tank is a 4 to 5 gallon tank you should

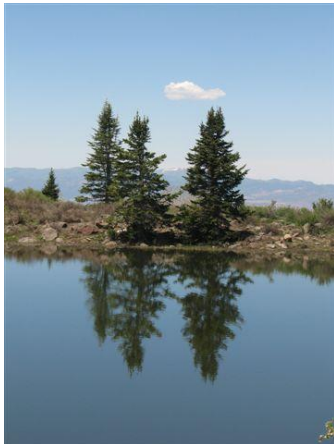


be ok. The trail winds to a point between 10,000 and 11,000 feet in elevation. The tallest point we will see is 12,173 feet (Delano Peak). Sometimes you can see mountain sheep on the trail. During some times of the year the trail is impassable because of snow. Bring a jacket, your camera and money for lunch, which will be a Hoover's Café. They are famous for huge, delicious chicken fried steak with homemade fries.

13. **THE LAKES:** If you were looking for a short ride, this would be a good one. The lakes, or what looks like small ponds to most of us, are located straight east of Fillmore. The ride is classified as an **EASY RIDE** and should take about three hours for a round trip, unless you want to snoop around the mountain for a while. The trail ends at the foot of Mount Catherine at about the 7,500-foot level. Check the jetting on your machine. On your way back there are several other roads to access either Pioneer Canyon or Chalk Canyon. The route back is the same one you went on.

14. **DEVILS ARM CHAIR:** The Devil Arm Chair ride is a great ride. The trail is classified as **INTERMEDIATE AND BEGINNER**. The ride will take up most of the day (six to seven hours). Plan on bringing a sack lunch. The first part of the trail takes you up Sand Rock Ridge. Once you reach the top to the first main road junction (White Pine Turn-off) you will head south. The trail will traverse about the entire south end of the PAHVANT Mountain Range. The trail will take you in and out of aspen and pine forests. The elevation for most of the ride will be between 9,500 and 10,000 feet. The Devils Arm Chair is a sand stone formation on the west side of the mountain range. To see the "arm chair" you need to use little imagination! I think the Devil must have a sense of humor!

15. **GOOSEBERRY SOUTH:** The Gooseberry Ride is rated **MODERATE** and is approximately 60 miles long, 90% of which is ATV trail. If you took it last year, you may want to know that the route has been slightly altered this year. The ride is well worth the hour+ of highway driving to get to the trailhead, which is just off I-70, seven miles east of Salina. The trail begins by fording the Salina River and then going around a sagebrush-covered hill. From there it winds through the cedars and onto a good road for quite a ways up to the edge of Maple Springs Canyon. The trail winds through the maple and oak along the rim of the canyon, eventually angling down into the canyon and then up a narrow side canyon through the pines and aspen. When it tops out at the beginning of the Oak Ridge Trail, the view is breathtaking. From there the trail follows mostly along the



ridge top along the Oak Ridge trail to the Browns Hole Trailhead. Here there are picnic tables and a restroom. The trail winds through the aspen and on to the Gates Lake Loop, past Farnsworth and Hamilton Reservoirs, then across bridges built just for ATV use. The trail rejoins a dirt road at Gates Lake and makes its climb high onto the mountain and into the pines. The trail retraces its path for a short distance in the aspen and then turns right at the Brown Hole Trailhead for a favorite section of the trail, the climb up fun switchbacks from Browns

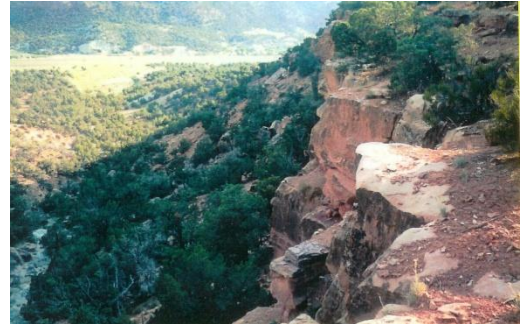
Hole to the Great Western Trail, then back to the staging area. Some of the faster riders may take another route to Brown's Hole. Bring your lunch, a jacket, and extra gas if you need it. Don't forget

your camera and plenty of film! One participant last year described this trail as the "best ATV trail on the planet"!

16. **COVE FORT HISTORICAL RIDE:** This ride is approximately 60 miles long and follows the foothills south from Fillmore, through Meadow, Kanosh and Dog Valley to the famous Cove Fort. Cove Fort is one of only three forts listed on the National Register of Historic Sites. Its walls and relics are original. In 1867, pioneers took just eight months to complete Cove Fort, which served as a way station between Fillmore and Beaver for travelers. The fort never suffered an Indian attack part due to Chief Kanosh becoming a great friend of the pioneers. A picnic area there will be the stop for the lunch the riders will bring with them. The stay at the fort can be tailored to the group's desires, but a quick walk through the old fort is a must.



17. **GOOSEBERRY NORTH: MODERATE** The Gooseberry North Ride begins at the same spot the south one does, from there going under I-70 and proceeding up the mountain through the juniper and very quickly into the pines and quakies. Some parts of the trail are very smooth and easy going, but there are a few spots that are more technical. Beautiful vistas are afforded the rider as they travel along the ridge tops and through shady stands of tree, past beaver ponds, through some great forested areas. Bring your lunch, a jacket, and extra gas if you need it. Don't forget the camera.



18. **KANOSH LOOP: EASY TO MODERATE** The ride begins through the fields and foothills that lead to the town of Kanosh, where a stop to top off the gas tanks is a good idea. From there the trail goes up Corn Creek Canyon, turning off the main road at the Cottonwood intersection to begin the climb up the mountain through oak, then aspen and pine. Wildflowers are a real plus on this ride with a variety of types as the terrain changes during the climb. The route makes a large loop across the foothills then climbing to the top of the mountain range for a ride through especially large aspen in country that is famous for record size bull elk and deer.



19. **AMASA VALLEY: MODERATE** To take this ride it is necessary to trailer 80 miles west of Fillmore to the staging area. The trail begins in sagebrush flat at the mouth of Miller Canyon, and traverses the foothills with a stop at a large sink hole then climbs to Amasa Valley. Visitors are surprised to see a lush green valley with stands of aspen and unusually shaped rock formations. The climb on the west side of the valley take riders to a breathing-taking cliff with an aerial



view of the valley nearly a mile below and mountains of Utah and Nevada in the distance. The adjacent cliffs are home to a stand of Bristlecone pines, some of which are several thousand years old. Remember your camera for the breathtaking views.

20. **TEEPLES CANYON: DIFFICULT** Teeples Canyon is actually a short side trip from the Pioneer Canyon Trail. It is not for the beginning rider! Riding through the boulders of the creek bottoms, the route crawls through maple, aspen, and pines finally ending in a large grassy meadow where an old saw mill once stood. Nearly every canyon in the area had a saw mill at one time or another, and the entire operation was usually moved to another canyon when they were finished. In Teeples Canyon there are still some reminders of days gone by. Many may have seen Teeples Canyon featured on Outdoors with Doug Miller in July, 2005. A great ride for an experienced rider.



21. **MEXICAN LUNCH RUN: EASY** Join other ATV/Mexican food connoisseurs for the great 60 mile ride over the top of the Pahvant Mountain Range and down into Richfield for lunch at Pepper Belly's, a favorite stop for Mexican food lovers. Bring money for lunch and a jacket as it gets cool at the high elevations. The top of the mountain in this area is a great spot for enjoying the mountain flowers that are in abundance at this time of year.

22. **OLD MINE TOUR: INTERMEDIATE** The majority of this ride is not difficult, but it has been rated intermediate for its length. The group will trailer to the staging area at Fremont Indian State Park. The ride is mostly through forested areas up the Joe Lott Trail in Dry Canyon with great views of the 11,000+ foot peaks of the Tushar Range. These 11,000+ peaks are inaccessible at this time of year because of the snow. The route begins in the cottonwood,



then oak ending in the pines and quakes. From there the route goes across the top of the mountain and down into Marysvale, then up the canyon to Miners Park. It then retraces the route to Marysvale and through the valley to Hoovers, then entering Deer Creek Canyon for the ride back up the mountain and on to Kimberly. There will be stops at mining areas such as the Silver King Mine, the Kimberly mining town, Bullion City, and others. At some there are old cabins or short walking tours to enjoy.



23. **PIPELINE LOOP: MODERATE** This short ride not far east of town is great for a rider with a few hours to spend on the trail. A few challenging spots keep the rider on his toes, but make for an interesting and fun riding experience.



24. **OVERNIGHT RIDE TO CASTLE ROCK CAMPGROUND: INTERMEDIATE:** A fun outdoor experience for the camper/ATVer. The group will leave Fillmore at 1 p.m. on Monday, traveling south to Kanosh and over the mountain and down to I-70, then on to the Castle Rock Campground which is part of the Fremont Indian

State Park. Admission to the museum is free to participants in this ride. A fun evening is planned with a delicious Dutch oven chicken dinner for those who would like to pay the extra \$15 charge. If you'd rather do your own thing, you certainly can opt for that instead.



Breakfast will be cooked the next morning by the dinner chef and is provided for all participants, even if you didn't the dinner the night before. A truck will be available to haul some of your camping gear. Mark your interest in this ride on your registration form and more information will be sent. Limited to the first 25 riders to sign up.

25. **SOUTH LONG RIDGE: DIFFICULT:** This ride is located not far east of Fillmore and is very steep and rocky in spots. It first winds through the pinon/juniper and then climbs the face of South Long Ridge. You keep going up until you think you must be to the top, then you climb some more. Once on the ridge top, the view is amazing. The route down takes you past Black Cedar Ridge. Two to three hours with a definite stop for picture taking.
26. **TRI-CANYON RIDE** involves three up-and-back climbs up three adjacent canyons. Two of the climbs are rated **intermediate**, and the last is rated **beginner**. The ride starts on the Sand Rock Ridge dirt road and cuts off to the southeast onto the Pine Creek trail. The ride first climbs up Pine Creek canyon to the gate. Turn around and ride back down, over to the next canyon, Dry Creek. Up and back Dry Creek Canyon. Pine Creek and Dry Creek canyons both have short steep grades, with a few off-camber sections. The creeks in both canyons are small, but should have a little flow and we'll cross them numerous times. Both canyons are narrow and shady. The last canyon is a short trip from the bottom of Dry Creek canyon north and east up to Mountain Sheep. This is an easy last leg with the turnaround point being a small clearing with a few old picnic tables under the pines.
27. **GPS Practice Course** Monday at 10 a.m. there will be a GPS Training and downloading of practice tracks in the pavilion northeast of the Statehouse Museum. (It is quieter there.) You will be given some help with running your GPS unit. Questions will be answered and you will receive the coordinates for the afternoon's practice course. There will be GPS people on the trails to help out if you need it. The practice course will begin about 1 p.m. - right after lunch.
28. **Flower Tour** This ride is rated fairly **easy** and takes the riders up on the mountain to destinations where the spring flowers are especially abundant. Forest service personnel guide this ride and have been keeping a close eye on which locations are the best for flower viewing. They will also answer questions about the flora and fauna of the area. A relaxed ride, but well worth the trip.
29. **School in Monroe, Utah.** We will go through Live Oak Canyon, which has a few steep inclines. The climb along a remote mountain road to the top of Monroe Peak 11,227 feet, you will have a spectacular view of the entire Sevier River Valley. The ride then travel to Manning Reservoir (Lunch) and onto the Anderson Dairy Trail. We will loop back to the main road, which takes you back across the mountain and down the canyon to Monroe. The ride has been rated **advanced**.
30. **Hot Pots:** This ride will follow the potluck/pizza/pool party on Tuesday and will take the riders to natural hot springs where they can take a warm dip if they would like to. Bring along your swimming suit if you want to try the pool. The temperature is a little over 100 degrees.



31. **Rides which will be trailered: Kimberly, Gooseberry, Cricket Mountains, Amasa Valley, Old Miners Tour, SPECIAL NOTE:** Those who are participating in rides that go through Kanosh, especially later in the week when you are getting tired, may prefer to cut off about 40 miles through the foothills and fields, by trailering to Kanosh and meeting their guide and group there. If you should decide to do this, please talk to your guide ahead of time and arrange a meeting place and time.